



Taoyuan Airport  
桃園機場



# TAIWAN TAOYUAN AIRPORT DIRECTORY

2015.6 ENGLISH VERSION



**Faster**

**12秒**

**Clearance**

**Apply for Automated  
E-Gate Service**

**No Lines**

**VIP Immigration Service**

**2 Minutes to Apply,  
12 Seconds to Pass Immigration**



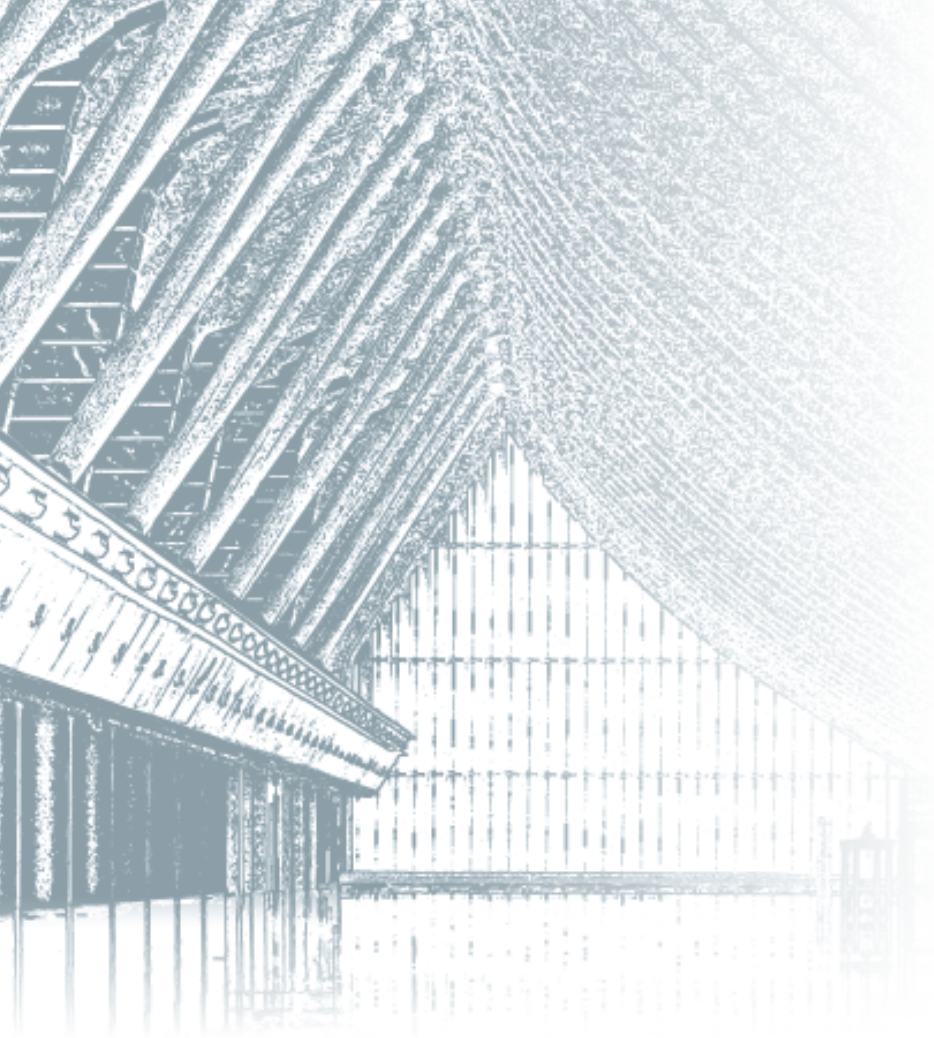
One Scan to Read Info



**National Immigration Agency, Ministry of the Interior**

Service Information: +886-3-3985010, ext. 7401~7405

<http://www.immigration.gov.tw>



Arrivals Information 02

Departures Information 06

Airline Counters 10

Transportation 12

Traveler Services 16

Terminal 1 Information Map 20

Terminal 2 Information Map 24

#### Main Service Counters

Taoyuan International Airport

Terminal 1:

Departures Service Counter: +886-3-2735081

Terminal 2:

Departures Service Counter: +886-3-2735086

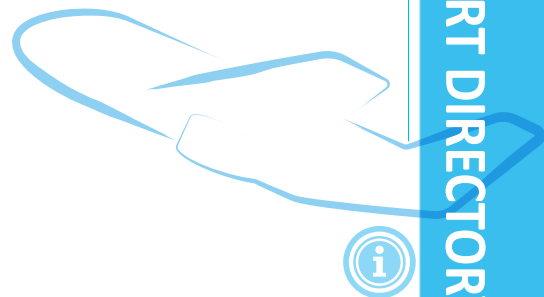
#### Tourism Bureau Service Counter

Terminal 1:

Arrivals Hall Service Counter: +886-3-3982194

Terminal 2:

Arrivals Hall Service Counter: +886-3-3983341





Quarantine

Immigration

Baggage Claim

Animal &amp; Plant Quarantine

Customs Inspection

## Mandatory Documents»

- ☉ **Taiwanese Travelers:** Passport, Disembarkation Card (not required for those with household registration in Taiwan)
- ☉ **Foreign Travelers:** Passport, Visa, Onward Journey Ticket, Disembarkation Card

## Quarantine»

Travelers proceeding to the fever screening station must remove their hat to facilitate infrared body temperature detection.

Those suspected of health abnormalities must undergo quarantine measures in accordance with immigration quarantine regulations in Taiwan.

**Centers for Disease Control, Ministry of Health and Welfare:**

Advice hotline: 1922

Service Information: Terminal 1, +886-3-3982584

Terminal 2, +886-3-3983395

<http://www.cdc.gov.tw/>

## Immigration Mandatory Documents»

- ☉ **Taiwanese Travelers:** Passport, Disembarkation Card (not required for those with household registration in Taiwan)
- ☉ **Foreign Travelers:** Passport, Visa, Onward Journey Ticket, Disembarkation Card
- ☉ **Automated e-Gate**

First time applicants must bring their passport and either their ROC ID card, NHI card, or driver's license to an e-Gate Registration Counter located in the arrivals or departures areas of Terminals 1 or 2.

**Eligibility:** Taiwanese nationals with household registration in Taiwan and foreign nationals with ID granting permanent residence and multiple re-entry. Must be at least 14 years old and 140 cm in height and cannot be subject to any travel restrictions.

**Required Documents:**

**Taiwanese travelers**

Passport or Kinmen-Matsu ID, national ID card (health card, driver's license)

\* Kinmen-Matsu ID can only be used at Kinmen Shuitou Port

**Foreign travelers**

Passport, Alien Resident Certificate (diplomat ID, Employment PASS Card)

\* For more detailed information, check the National Immigration Agency (NIA) website.

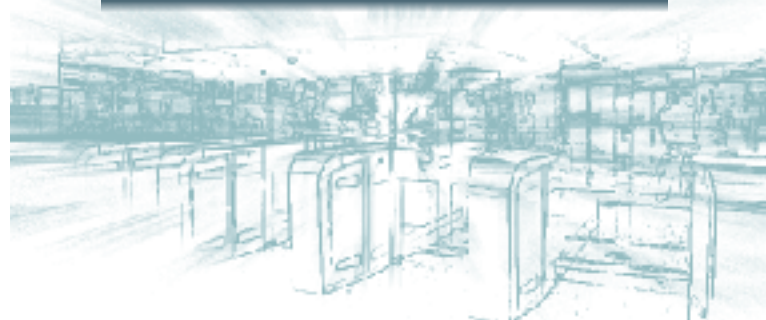
**National Immigration Agency, Ministry of the Interior**

Service Information: +886-3-3985010, ext. 7401~7405

<http://www.immigration.gov.tw>

## ☉ E-Gate Enrollment Counters

Place	Time	Location
Terminal 1, Taoyuan Airport	07:00-22:00	• At the NIA counter beside Counter 12 of the Departure Hall
	10:00-23:00	• ID inspection area of Arrival Hall
	07:00-22:00	• At the NIA counter in front of Counter 15 of the Departure Hall
Terminal 2, Taoyuan Airport	10:00-23:00	• ID inspection area of Arrival Hall
Songshan Airport	08:00-18:00 Airport Operating Hours	• 1F, Departure Hall, Terminal 1 • ID inspection area of the arrivals and departures areas (hours based on flight times)
Taichung Airport	07:00-18:00	• ID inspection area of Departure Hall
	09:00-20:00	• ID inspection area of Arrival Hall
Kaohsiung Airport	07:00-17:00	• ID inspection area of Departure Hall
	12:00-22:00	• ID inspection area of Arrival Hall
	05:15-17:00	• 1F Lobby Service Counter
Kinmen Shuitou Port	Port Opening Hours	ID inspection areas for arrivals, departures (hours based on ship times)
1F, North Tower, Joint Central Government Office Building	Monday-Friday, 08:00-17:00	Citizens can directly apply for e-Gate services after receiving their passport from the Bureau of Consular Affairs
NIA Service Stations	Monday-Friday, 08:00-17:00	Taipei Service Station, Taichung 1st Service Station, Chiayi Service Station and Kaohsiung 1st Service Station





## Baggage Claim»

After passing through immigration, travelers should proceed to the baggage claim area to pick up their baggage.

### ● Bonded Baggage (24H)

This airport provides bonded luggage service. Luggage that travelers do not wish to take through customs may be deposited at the bonded luggage counter for collection on departure.

Service Information: Terminal 1, +886-3-3982326

Terminal 2, +886-3-3983369



## Animal & Plant Quarantine»

Travelers are strictly prohibited from entering with fresh fruits or vegetables along with other unauthorized animal or plant products. Anyone carrying these products must complete quarantine procedures at the Animal & Plant Quarantine counter.

**Bureau of Animal and Plant Health Inspection and Quarantine, Council of Agriculture, Executive Yuan**

Service Information: Terminal 1, +886-3-3982268

Terminal 2, +886-3-3983371

<http://www.baphiq.gov.tw/home.php>

## Customs Inspection»

After claiming baggage, travelers whose baggage does not exceed duty free limitations and who are not carrying controlled or prohibited items or items with import restrictions should proceed to the counter labeled "Nothing to Declare" (green). Other travelers should proceed to the counter labeled "Goods to Declare" (red) to undergo customs procedures.

### ● Import Restrictions

- Items not on the List of Commodities Subject to Import and Export Restrictions, that maximum value US\$20,000
- Items to a value exceeding the above allowance, and items on the List of Commodities Subject to Import and Export Restrictions, that have an import license must be presented.

\* For more detailed information, check the Taipei Customs, Customs Administration, Ministry of Finance website.

Taipei Customs, Customs Administration, Ministry of Finance

Service Information: Terminal 1, +886-3-3982307

Terminal 2, +886-3-3983386

<http://taipei.customs.gov.tw>

## Hotel Information Counter

Provides reservation services and traveler information for hotels near the airport and within the city.

Terminal 1: North Side of Arrivals Hall.

Terminal 2: South Side of Arrivals Hall.

## Airport Hotel (Novotel Hotel)

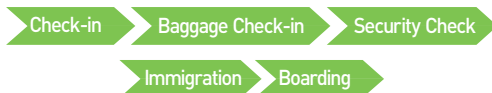
Novotel Hotel, Taipei Taoyuan International Airport, is about five minutes drive from the airport.

Free shuttle bus pickup locations:

Terminal 1: Platform 1 of the B1 Arrivals Hall bus pickup area.

Terminal 2: Platform 9 of the Arrivals Hall bus pickup area.





Travelers should complete check-in procedures at their respective airline counters two to three hours before flight departure.

The latest time to complete check-in procedures prior to departure is based on the regulations of each airline.

## Mandatory Documents»

- ◎ **Taiwanese Travelers:** Passport, Plane Ticket
- ◎ **Foreign Travelers:** Passport, Plane Ticket, Embarkation Card (only for travelers who changed their passport after entering Taiwan)

## Check-in»

Travelers must present their plane ticket and passport to complete check-in, seat assignment, and baggage check-in.

### ◎ Check Plane

Remember to take all documents, boarding passes and baggage tickets. To reduce time in line take advantage of self-check in counters along with airline website and mobile check-in services.

\* For inquiries regarding whether your plane ticket and passport are compatible with these facilities, please contact your airline. Self check-in service is based on individual airline regulations.

### ◎ Baggage Check-in

After completing check-in procedures and baggage check-in, ensure that your baggage has passed through X-ray inspection before leaving the counter.

- Travelers bound for the United States are allowed up to two free pieces of checked baggage, with each piece limited to 23 kg.
- Travelers bound for countries or regions outside the United States receive a free baggage allowance of up to 30 kg for first class and business class passengers, and 20 kg for economy class passengers.
- Do not place hazardous materials (eg: lighters, spare lithium batteries, flammable liquids, etc.) in checked baggage.

\* Free baggage allowance restrictions vary. For more details, check with your airline.

### ◎ Baggage Storage and Packing

Baggage storage, delivery, packing, home retrieval, and home delivery services are provided at the Baggage Service Counters in Terminals 1 and 2. Service Hours: 06:00~23:30

**Terminal 1** North Side of 1F Departures Hall +886-3-2631138  
South Side of 1F Arrivals Hall +886-3-2639972

**Terminal 2** South Side of 1F Arrivals Hall +886-3-2639372  
South Side of 3F Departures Hall +886-3-2631521

## Customs Declare & VAT Refund»

- ◎ Foreign travelers who make purchases of at least NT\$3,000 on the same day from the same Tax Refund Shopping (TRS)-posted store are eligible for a VAT refund. To claim the refund, they must take the goods out of the country within 30 days of purchase and apply at the customs service desk at their port of departure.
- ◎ If the store has posted that it is qualified to conduct Authorized Cash Tax Refunds - TRS, and the customer's same-day accumulated tax refund is NT\$1,000 or less (equivalent to purchases of taxable goods amounting to approximately NT\$21,000 or less), then the customer can apply for a refund at the store.
- ◎ For any inquiries regarding departure customs declaration procedures or items carried as luggage, please contact the customs service counter.

\* For more detailed information, check the Taipei Customs, Customs Administration, Ministry of Finance website.

### Customs Declare & VAT Refund Service Counter (24H)

Service Information: Terminal 1, +886-3-3982308

Terminal 2, +886-3-3983401

Service Location: 1F Departures Hall, Terminal 1; 2F Gift Boulevard, Terminal 2



## Insurance Services

Terminal 1: 3F Departures Hall

Terminal 2: 3F Departures Hall

Service Hours: 05:00~22:30

## Currency Exchange

Terminal 1: B1 Food Court, 1F Arrivals and Departures Halls and Baggage Process Center, 2F Arrivals Hall, 3F Departures Hall

Terminal 2: B2 Food Court, 1F Arrivals Hall and Baggage Process Center, 2F Arrivals Hall, 3F Departures Hall



## Security Check»

Before passing through the metal detector, travelers should remove all metal objects and send them through the X-ray machine with their carry-on baggage.

- Carry-on Baggage Regulations: Liquid, gel or aerosols carried on or placed in carry-on baggage must be held in containers not exceeding 100 ml each. These containers should be placed in a resealable, transparent plastic bag no more than 1 liter in volume.
  - Each traveler is limited to one aforementioned plastic bag. Travelers must remove the bag from their carry-on baggage in the inspection line and place it in the plastic basket for visual and X-ray inspection.
  - Travelers carrying baby food/breast milk or other liquids, gels or aerosols necessary for diabetic treatment or other medical purposes should notify the airline in advance and declare the items to security inspectors in the security lines. Upon obtaining approval, these items may be excluded from the aforementioned limitations.
  - Departing or transit travelers may carry liquids, gels or aerosols purchased at airport control zones or onboard previous flights. However, the items must be packaged and sealed in plastic bags showing valid proof of purchase.
  - Non-solids which do not meet the regulations above may only be placed within checked baggage.
    - \* Carry-on bag dimensions are limited to 56 x 36 x 23 cm.
    - \* Aforementioned regulations can vary based on destination and airline.
- Travelers should check with their airline for more detailed information.

Service Information: Terminal 1, +886-3-3982433

Terminal 2, +886-3-3981832

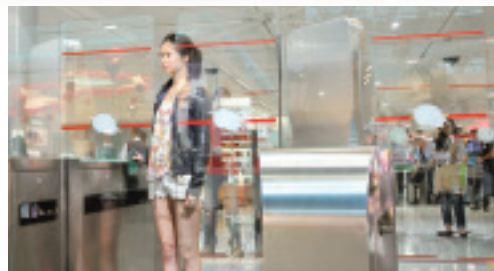
## Immigration & Boarding»

After passing through the security check, travelers need the following documents for immigration.

**Taiwanese Travelers:** Passport, Boarding Pass

**Foreign Travelers:** Passport, Visa, Boarding Pass, Embarkation Card (only for travelers who changed their passport after entering Taiwan)

Service Information: +886-3-3985010, ext. 7401~7405



### Automated e-Gate

First time applicants must bring their passport and either their ROC ID card, NHI card, or driver's license to an e-Gate Registration Counter located in the arrivals or departures areas of Terminals 1 or 2.

**Eligibility:** Taiwanese nationals with household registration in Taiwan and foreign nationals with ID granting permanent residence and multiple re-entry. Must be at least 14 years old and 140 cm in height and cannot be subject to any travel restrictions.

**Required Documents:**

#### Taiwanese travelers

Passport or Kinmen-Matsu ID, national ID card (health card, driver's license)

\* Kinmen-Matsu ID can only be used at Kinmen Shuitou Port

#### Foreign travelers

Passport, Alien Resident Certificate (diplomat ID, Employment PASS Card)

\* For more detailed information, check the National Immigration Agency (NIA) website.

**National Immigration Agency, Ministry of the Interior**

Service Information: +886-3-3985010, ext. 7401~7405

<http://www.immigration.gov.tw>

- After passing through the carry-on luggage security control, passengers are free to use the departure lounge facilities and shop in the duty-free stores, but please be at your boarding gate no later than 40 minutes before your flight departure time.

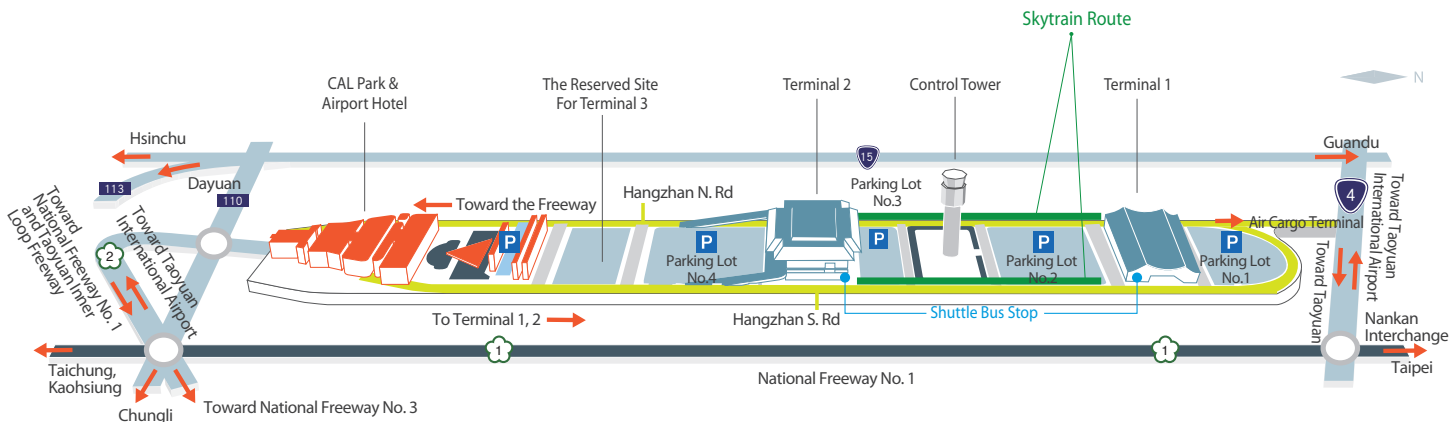
## TERMINAL 1

<b>CI</b> China Airlines	<b>9C</b> Spring Airlines
<b>MH</b> Malaysia Airlines	<b>EK</b> Emirates Airlines
<b>PR</b> Philippine Airlines	<b>HO</b> Juneyao Airlines
<b>VN</b> Vietnam Airlines	<b>MM</b> Peach Aviation
<b>KE</b> Korean Air	<b>JW</b> Vanilla Air
<b>3K</b> Jetstar	<b>XT</b> Indonesia AirAsia X
<b>GE</b> TransAsia Airways	<b>D7</b> Air Asia X
<b>TG</b> Thai Airways	<b>AK</b> Air Asia
<b>5J</b> Cebu Pacific Air	<b>TR</b> Tiger Airways
<b>3U</b> Sichuan Airlines	<b>IT</b> Tigerair Taiwan
<b>CX</b> Cathay Pacific	<b>VJ</b> VietJet Air
<b>KA</b> Dragon Airlines	<b>ZV</b> V Air
<b>NX</b> Air Macau	<b>TW</b> T'way Air
<b>FE</b> Far Eastern Air Transport	<b>DG</b> CEBGO, INC
<b>TZ</b> Scoot	<b>7C</b> Jeju Air

## TERMINAL 2

<b>CI</b> China Airlines (Flights to USA, Canada, Australia Japan and Mainland China)	<b>BR</b> Eva Airways
<b>JL</b> Japan Airlines	<b>NH</b> All Nippon Airways
<b>CA</b> Air China	<b>OZ</b> Asiana Airlines
<b>CZ</b> China Southern Airlines	<b>B7</b> Uni Air
<b>MU</b> China Eastern Airlines	<b>BX</b> Air Busan
<b>SC</b> Shandong Airlines	<b>HX</b> Hong Kong Airlines
<b>HU</b> Hainan Airlines	<b>UA</b> United Airlines
<b>ZH</b> Shenzhen Airlines	<b>MF</b> Xiamen Airlines
<b>SQ</b> Singapore Airlines	<b>TK</b> Turkish Airlines
<b>KL</b> Royal Dutch Airlines	
<b>DL</b> Delta Air Lines	
<b>AE</b> Mandarin Airlines (Mainland China Flights)	





## Buses to the City»

Terminal 1 Bus Waiting Area: B1 Arrivals Hall

Terminal 2 Bus Waiting Area: 1F Arrivals Hall (Northeast Side)

Destination	Company	Service Hours
<b>Taipei</b>	Taipei City	Kuo-Kuang, Free Go, Evergreen, CitiAir Bus
	Taipei Main Station	Kuo-Kuang, CitiAir Bus
	Songshan Airport	Kuo-Kuang
	Nangang Exhibition Center	Kuo-Kuang
	Taipei City Hall Bus Station	CitiAir Bus
	Banciao / Xindian	CitiAir Bus
	Yuanshan Bus Station	Kamalan Bus
	St. Ignatius High School Station	San Chung Bus
<b>Taichung</b>	Kuo-Kuang, Free Go, Ubus	06:00-01:00 Approximate Travel Time: 2 Hours
<b>Zhongli Bus Station</b>	Ubus	Ubus provide 24 hours service, and the bus time Interval is 30 minutes. Additional Departures: 01:00, 02:00, 03:00. Approximate Travel Time: 30 Minutes
<b>Taoyuan</b>	Taoyuan Bus	Taoyuan Airport: 06:35-22:10 Taoyuan: 05:55-21:30 Approximate Travel Time: 40 Minutes
<b>Zhongli</b>	Taoyuan Bus	Taoyuan Airport: 07:55-20:15 Zhongli: 07:00-19:25 Approximate Travel Time: 40 Minutes
<b>Changhua</b>	HO-HSIN Bus	Northbound 23:00 Southbound 06:00 Approximate Travel Time: 3 Hours

※ The service time Information in this table will depend on airport operation to adjustments, please check the service hours in real time.

※ **Taoyuan High Speed Rail Shuttle Bus:**

06:20-22:45, Departures every 5-10 minutes, travel time approximately 25 minutes



## Car Rental Services»

- ◎ South Side of 1F Arrivals Hall, Terminal 1 06:00-00:30  
Telephone: +886-3-3983979
- ◎ North Side of 1F Arrivals Hall, Terminal 2 05:00-24:00  
Telephone: +886-3-3983636

## Taxi Service

- ◎ South Side of 1F Arrivals Hall, Terminal 1 00:00-24:00  
Telephone: +886-3-3982832
- ◎ South Side of 1F Arrivals Hall, Terminal 2 00:00-24:00  
Telephone: +886-3-3983599



## Driving»

### Arriving at Airport

- Take National Freeway No. 1 to National Freeway No. 2 → Dayuan Interchange → Taiwan Taoyuan International Airport
- From Dayuan take County Highway 110 → Dayuan Interchange → Taiwan Taoyuan International Airport
- From Provincial Highway No. 4 → Toward Nankan → Taiwan Taoyuan International Airport

### Leaving Airport

- Dayuan Interchange → Toward National Freeway No. 1 and Taoyuan Inner Loop Freeway → South Toward Hsinchu, Taichung, Kaohsiung
- Nankan Interchange → Toward National Freeway No. 1 → North Toward Taipei
- Airport Line → Provincial Highway No. 4 → North Toward Tamsui/Guandu via Zhuwei

\* Parking is restricted on airport departure and arrival levels. Visitors are advised to take advantage of the 30-minute free grace period in airport parking lots.

\* Use of Parking Lot No. 2 (parking area for large passenger vehicles) and Parking Lot No. 3 (exclusive to large passenger vehicles) is free for the first two hours. Thereafter, parking fees are based on posted rates.

## Parking Lots»

### Terminal 1 Parking Lots

Departing Travelers: Use Parking Lot No. 1 (Near the Departure Hall)

Traveler Pick-up: Use Parking Lot No. 2 (Near the Arrival Hall)

Service Center: South side of B1, Terminal 1

Service Number: +886-3-3982160

### Terminal 2 Parking Lots

Group Travelers (Large Vehicles): Use Parking Lot No. 3 (Near the airport control tower)

Non-group Travelers (Small Vehicles): User Parking Lot No. 4 (Near the entrance of the Departure/Arrival halls)

Service Center: South side of B1, Terminal 2

Service Number: +886-3-3931999

### Parking Fees

Large Vehicles: NT\$60 for the first hour, NT\$40 each additional half hour (daily maximum of NT\$980)

Small Vehicles: NT\$30 for the first hour, NT\$20 each additional half hour (daily maximum of NT\$490)

## Terminal Transit»

### Skytrain

Free Skytrain service between terminals is provided for passengers and workers.

#### Waiting Areas

Terminal 1: Take the elevator at the south end of the Terminal 1 arrival Hall to the 3F Skytrain waiting area.

Terminal 2: From the 3F of the Departure Hall, take the elevator in the corridor by Counter 18 to the 1F Skytrain waiting area.

Peak Hour Headway: 2-4 minutes (0600-2200)

Off-peak Hour Headway: 4-8 minutes (2200-2400)

Nighttime Service: Service on-demand (travelers press a platform button to call for the Skytrain)

### Shuttle Bus

Free shuttle bus service between terminals is provided for use by travelers and airport workers.

#### Waiting Areas

Terminal 1: South rain shelter area of 1F by shuttle bus signs 6-10

Terminal 2: Southeast side of 1F Arrival Hall beside the shuttle bus sign

#### Headway

Buses depart every 10-30 minutes depending on flight arrival and departure times

Service Number: +886+3-3838432





## Free Service Facilities»



### Free Airport Wi-Fi

T1 T2 All area



### Free Computer Service

T1 Non-restricted Area: B1 food court, 1F departure and arrival hall, 3F departure area  
 Restricted Area: 2F Transfer area, 3F departure corridor  
 T2 Restricted Area: 3F departure corridor



### "Lost Items Search" Online Platform

<http://laf.taoyuan-airport.com/laf/>



### Islamic, Protestant/Catholic and Buddhist Prayer Rooms

T1 Restricted Area: Near Gates A4, B3  
 T2 Restricted Area: Near Gates C1, D7

### Passenger Service Vehicles

T2 Restricted Area:  
 2F departures corridor



### Bookcrossing Station

T1 Non-restricted Area:  
 South side of 1F arrival hall (children play area)  
 T2 Non-restricted Area: North side of 1F arrival hall  
 Restricted Area: Gate C5, Gate D2 of Mind Garden Airport Library



### Breastfeeding room

T1 Non-restricted Area: B1 food court, South side of 1F arrival hall,  
 Restricted Area: 2F Transfer area, 3F departure corridor  
 T2 Non-restricted Area: North side of 1F arrival hall  
 Restricted Area: 3F departure corridor



### Children Play Area

T1 Non-restricted Area: B1 food court, South side of 1F arrival hall  
 Restricted Area: 2F transfer area, 3F departure corridor  
 T2 Non-restricted Area: North side of 1F arrival hall  
 Restricted Area: 3F departure corridor



### LOHAS Massage Area

T1 Non-restricted Area: 3F departure hall  
 Restricted Area: 2F transfer area, 3F departure corridor  
 T2 Restricted Area: 3F departure corridor



### Shower Room

T1 Restricted Area: 1F baggage process center, 2F transfer area, 4F departure area  
 T2 Restricted Area: 1F baggage process center, 4F departure area



### Wheelchairs and Assistive Services

T1 T2 Non-restricted Area: Departure Hall Airport Service Desk

Wheelchairs and staff are on hand to assist disabled people, elderly people and pregnant women in traveling through the airport and passing through immigration and customs.



## Transfer Services and Facilities»

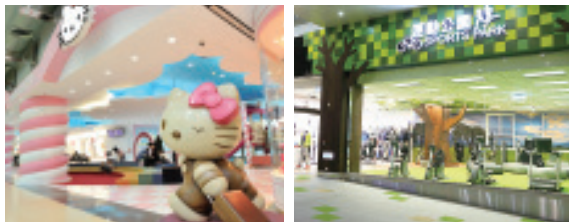
Taoyuan Airport's readiness to serve is especially apparent among transfer passengers, who can take advantage of special transfer counters then enjoy the shopping, food, massage and beauty services available in the Terminal 1 and 2 departure corridors or relax in the transfer area movie theater and bathing rooms. Whether travelers stop for a long or quick layover, Taoyuan Airport makes them feel right at home.





## Leisure and Entertainment»

The many leisure facilities and services provided at Taoyuan Airport include free meeting rooms, children's play areas, massage chairs, reading rooms, cultural galleries, viewing areas, fitness rooms, gaming, and themed waiting lounges. Travelers are welcome to explore items that reveal Taiwan's rich culture while enjoying its considerate service.



## Shopping Area»

The airport gathers not only famed brand items from around the world but also some of the most exciting goods found in Taiwan. The meeting of global brand items and Taiwanese specialty products makes Taoyuan Airport a shopping paradise in Asia.

### Terminal 1

Non-restricted Area: B1 food court, 1F departure and arrival hall, 3F departure hall

Restricted Area: 2F arrival hall, 3F outside the departure ID inspection area and departure corridor

### Terminal 2

Non-restricted Area: 1F arrival hall, 2F Souvenir Avenue

Restricted Area: 2F arrival corridor, 3F international boutique shops, 3F departure corridor



## Dining Services»

When taking a break from the airport's cultural delights, travelers can discover why Taiwan is known as a culinary capital of the world. From traditional, home-style dishes to foreign delicacies there is something for everyone. Free Taiwanese snacks are also sometimes offered as a way of spreading word of Taiwan's culinary culture and generosity.



### Terminal 1

Non-restricted Area: B1 food court, 1F arrival hall, 3F departure hall

Restricted Area: 2F Transfer area, 3F departure and arrival hall

### Terminal 2

Non-restricted Area: B2 food court, 1F arrival hall, 4F departure food area

Restricted Area: 3F departure corridor, 4F departure food court

## Business Center

### Huan Yu VIP Terminal

2F Arrival Hall, Terminal 2, Opening Hours 08:00-20:00 (Depends on flight schedule)

Toll-free number (Taiwan only): 0800-268-999

Service number +886-3-3932525#168

<http://www.hyvip.com.tw/>

### The More International Business Center & Premium Lounge

4F Arrival Hall, Terminal 1 and Terminal 2

Service Hours: 06:00~23:30

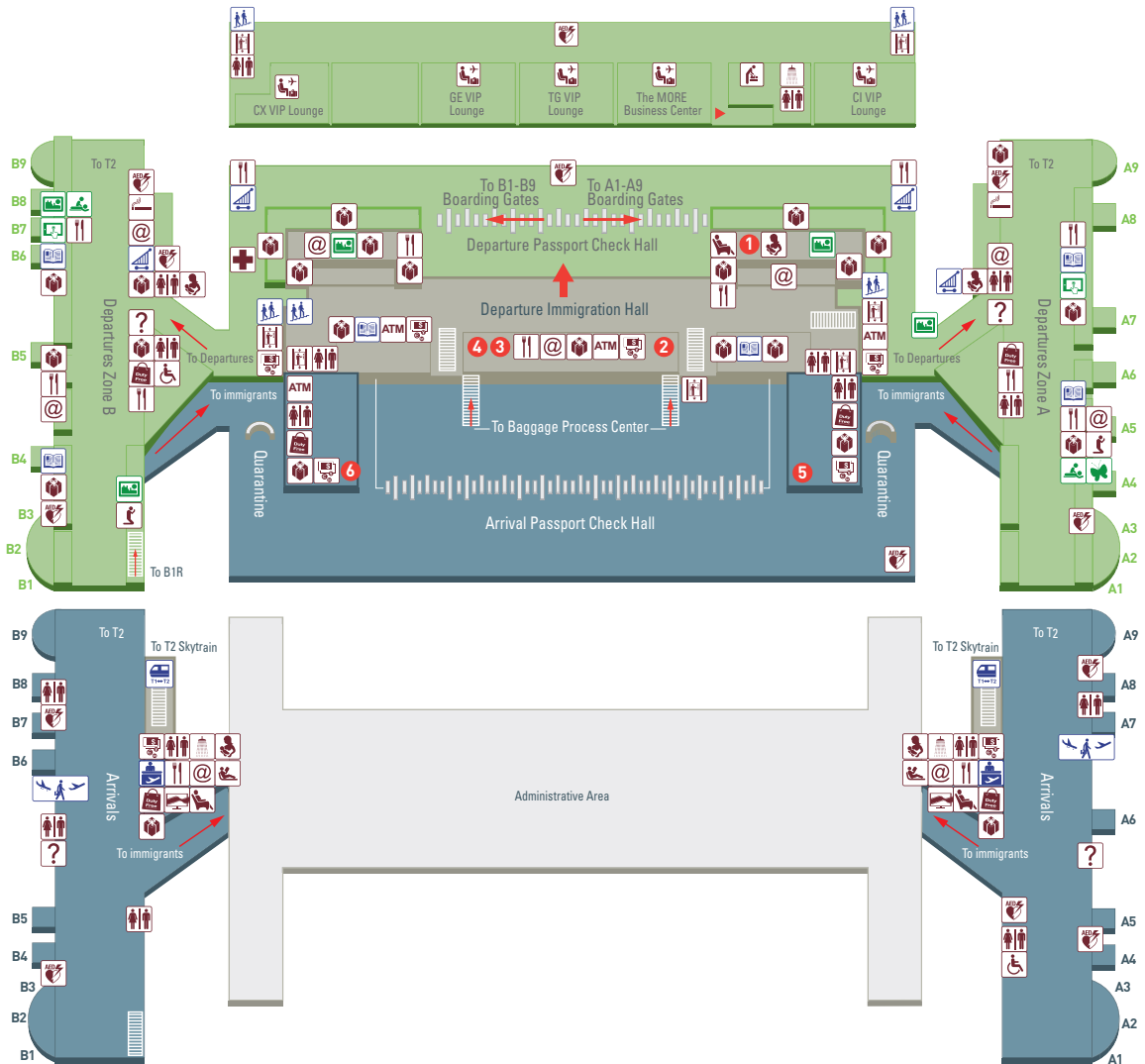
Service Information: +886+3-3983333

<http://www.moregroup.com.tw/>

4F

3F

2F



- ① Powder Room
- ② ④ Insurance Counters
- ③ Mobile Tourist Services
- ⑤ National Immigration Agency
- ⑥ Ministry of Foreign Affairs Office of Taoyuan Airport

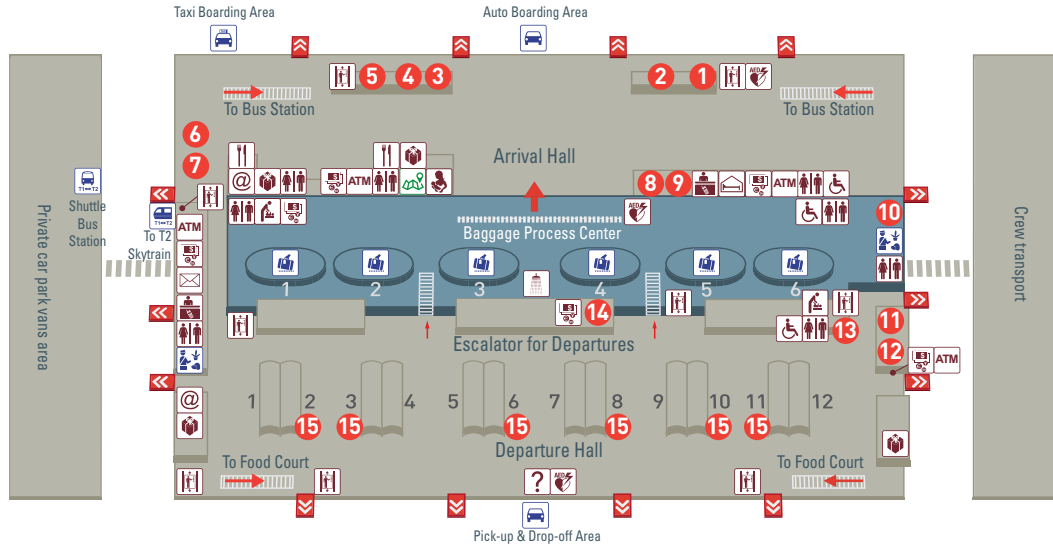
■ Arrival Area ■ Departure Area ■ Non-Controlled Area

- ? Information @ Internet [E] Elevator [S] Smoking lounge [AED] Automated external defibrillator [S] Shops
- [R] Restaurant [CE] Currency exchange [R] Restroom [RD] Restroom for the disabled [N] Nursery room
- [BR] Breastfeeding room [RA] Rest area [CPA] Children play area [PR] Prayer room [SH] Shower [ATM] ATM
- [DFS] Duty free service counter [LOHAS] LOHAS Massage area [MAV] Multimedia AV area [LC] Luggage carts [ST] Stairs
- [TR] Transfer [ADTC] Airlines desk/ Transfer counter [ST1/2] Skytrain to terminal 1 / 2 [BS] Book store [AS] Automatic sidewalk
- [MS] Massage service [AG] Art gallery [LL] Landscape lounge [BG] Butterfly garden [EL] e-Library

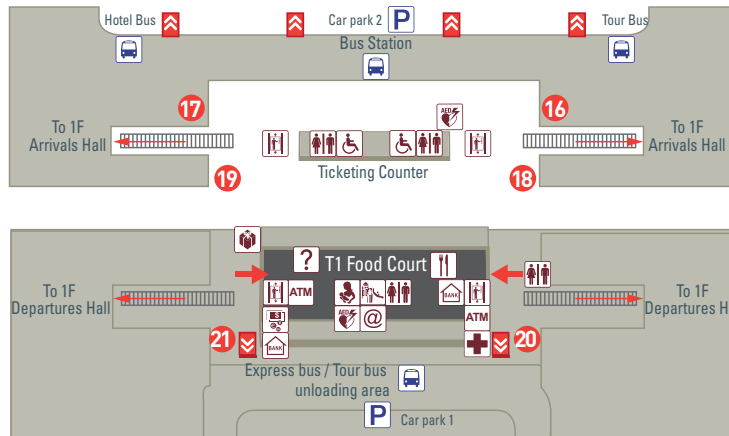




1F



B1

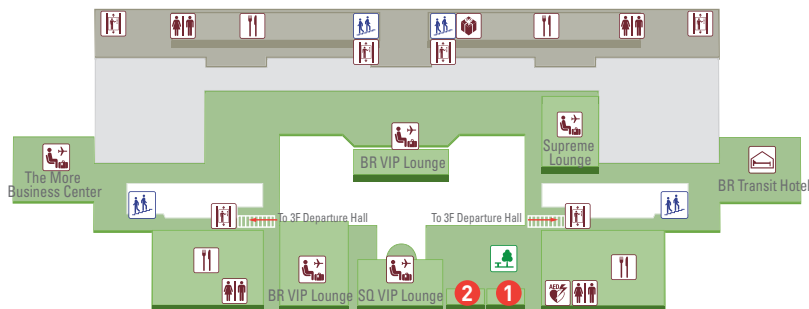


- ① Rental Car Service Center
- ② Tourism Bureau's Service Counter
- ③ Electronic Stored Value Card Service
- ④ International Medical Service Center
- ⑤ Taxi Area
- ⑥ ⑪ Baggage Service Center
- ⑦ Mobile Tourist Services
- ⑧ Foreign workers Airport Pick-up Service Center
- ⑨ Duty Free Shop Service Center
- ⑩ Left Luggage
- ⑫ National Immigration Agency
- ⑬ Documents, Photographic Services
- ⑭ Customs Declare & VAT Refund
- ⑮ Self-Check-in Counters
- ⑯ ⑰ ⑳ ㉑ Parking Auto-Pay Station
- ⑲ ⑱ Convenience Stores

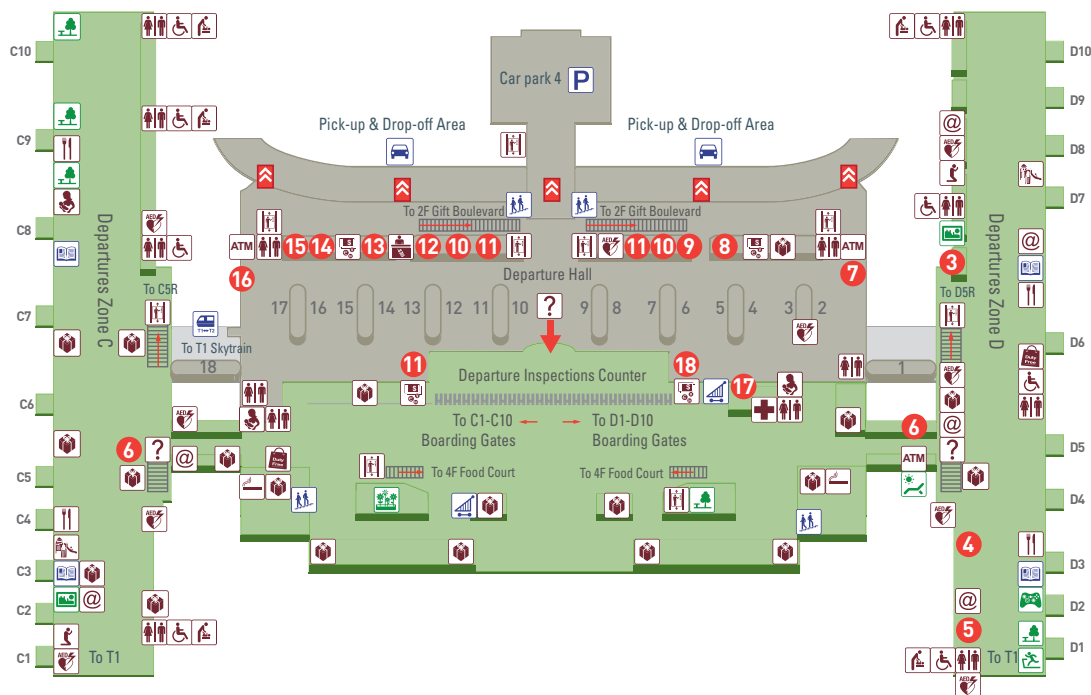
■ Arrival Area ■ Departure Area ■ Non-Controlled Area

- ① Information ② Internet ③ Elevator ④ Post office ⑤ Automated external defibrillator
- ⑥ Shops ⑦ Restaurant ⑧ Currency exchange ⑨ Rest area ⑩ Nursery room ⑪ Breastfeeding room
- ⑫ Restroom ⑬ Restroom for the disabled ⑭ Children play area ⑮ Hotel information ⑯ Bank
- ⑰ Telecommunication service ⑱ Shower ⑲ ATM ㉑ Medical center ㉒ Escalator ㉓ Baggage claim
- ㉔ Skytrain to terminal 1 / 2 ㉕ Transfer ㉖ Airlines desk/Transfer counter ㉗ Animal & plant quarantine
- ㉘ Ticketing counter ㉙ Stairs ㉚ Internet access in public area ㉛ National Park Travel News

4F



3F

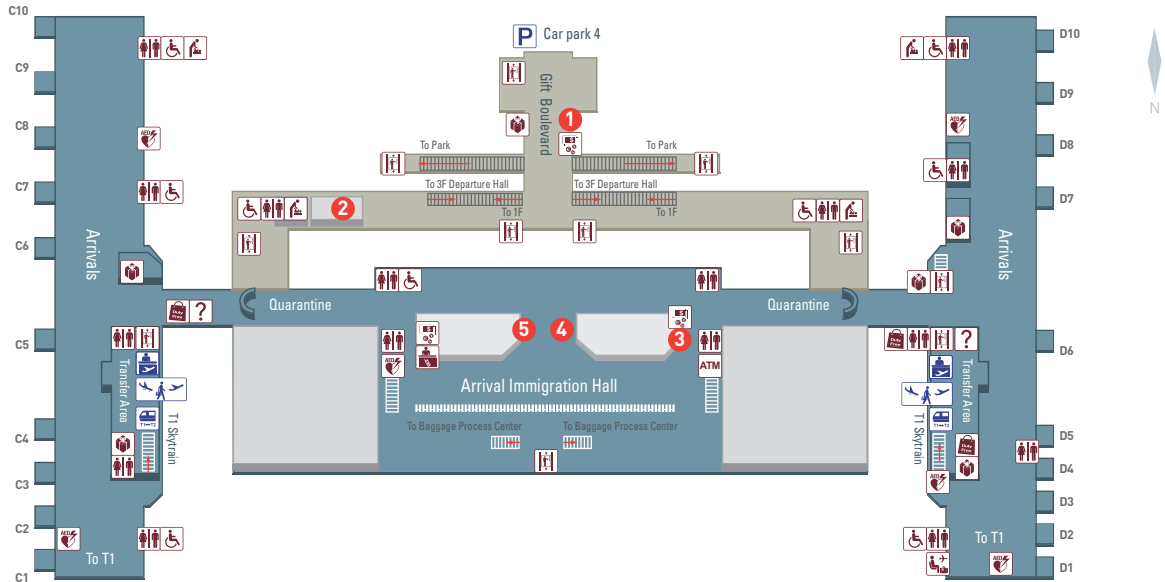


- 1 Beauty Center and Spa
- 2 Blind Massage Center
- 3 JL VIP Lounge
- 4 CI VIP Lounge
- 5 Mind Garden Airport Library
- 6 Passenger Service Vehicle
- 7 9 11 16 Self-Check-in Counters
- 8 Mobile Tourist Services
- 10 Insurance Counters
- 12 Hai Tien Forwarding Counter
- 13 National Immigration Agency
- 14 E-gate Enrollment
- 15 Baggage Service Center
- 17 Bonded Baggage Claim
- 18 Official Pass Application Section

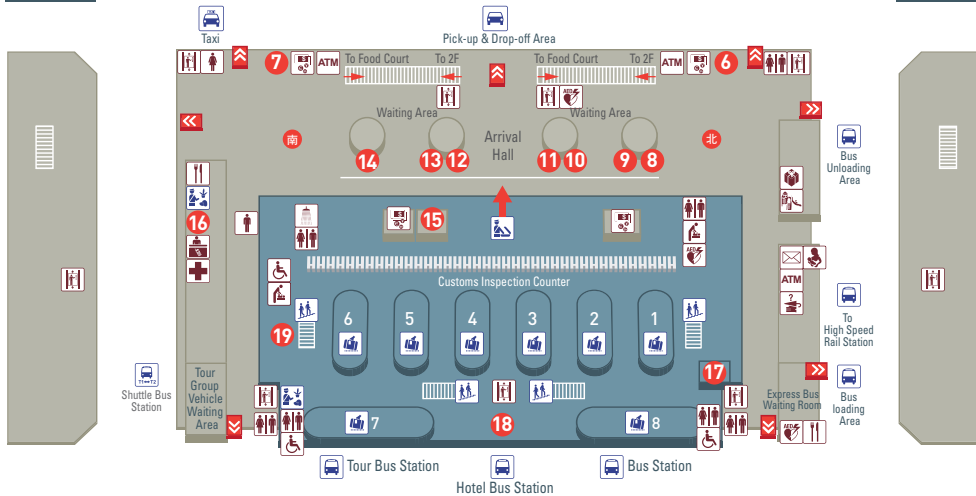
Arrival Area Departure Area Non-Controlled Area

- ? Information @ Internet ||| Elevator AED Automated external defibrillator ATM ATM Shops Duty free service counter
- || Restaurant Currency exchange Restroom Restroom for the disabled Nursery room LOHAS Massage area
- Breastfeeding room Children play area Prayer room Hotel information Telecommunication service
- Medical center Smoking lounge Rest area Luggage carts Stairs Skytrain to terminal 1/2
- Over-sized check-in counters Automatic sidewalk Art Gallery Sport Park
- Sunlight Lounge Landscape Lounge Formosa Green Wall E-Generation, E-sports Experience center

2F



1F



- ① Customs Declare & VAT Refund
- ② Convenience Stores
- ③ Mobile Tourist Services
- ④ National Immigration Agency
- ⑤ Ministry of Foreign Affairs Office of Taoyuan Airport
- ⑥ Tourism Bureau's Service Counter
- ⑦ Duty-Free Shop Service Center
- ⑧ Travel Information Service
- ⑨ International Health Liaison Center
- ⑩ Car Rental & Limousine
- ⑪ Electronic Stored Value Card Service
- ⑫ Hotel Information
- ⑬ Taxi Area
- ⑭ Foreign Worker Arrival Service
- ⑮ Payment of Customs Duty
- ⑯ Baggage Service Centre
- ⑰ ⑱ Airline Luggage Service Counter
- ⑲ Bonded Baggage Service

■ Arrival Area ■ Departure Area ■ Non-Controlled Area

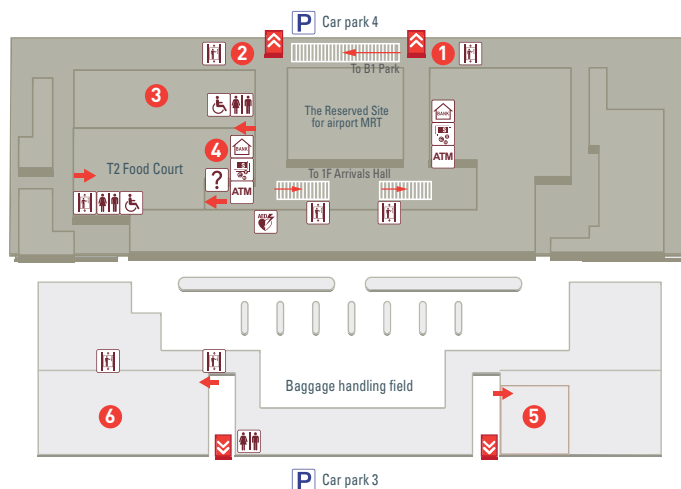
- ① Information ② Internet ③ Elevator ④ Post office ⑤ Automated external defibrillator
- ⑥ Shops ⑦ Restaurant ⑧ Currency exchange ⑨ Medical center ⑩ Restroom ⑪ Restroom for the disabled
- ⑫ Nursery room ⑬ Breastfeeding room ⑭ Children play area ⑮ Hotel information ⑯ Telecommunication service
- ⑰ Lost and found ⑱ ATM ⑲ Shower ⑳ Duty free service counter ㉑ Stairs ㉒ Skytrain to terminal 1 / 2
- ㉓ Baggage claim ㉔ Animal & plant quarantine ㉕ Customs ㉖ Transfer ㉗ Airlines desk/Transfer counter
- ㉘ Automatic sidewalk



B1



B2



- ① ② Parking Auto-Pay Station
- ③ B124 Conference Room
- ④ Convenience Stores
- ⑤ Payment of customs duty
- ⑥ B0647 Conference Room

- Arrival Area Departure Area Non-Controlled Area
- ? Information ? Elevator ? Automated external defibrillator
- ATM ATM Bank ? Currency exchange ? Restroom ? Restroom for the disabled
- ? Restaurant ? Automatic sidewalk